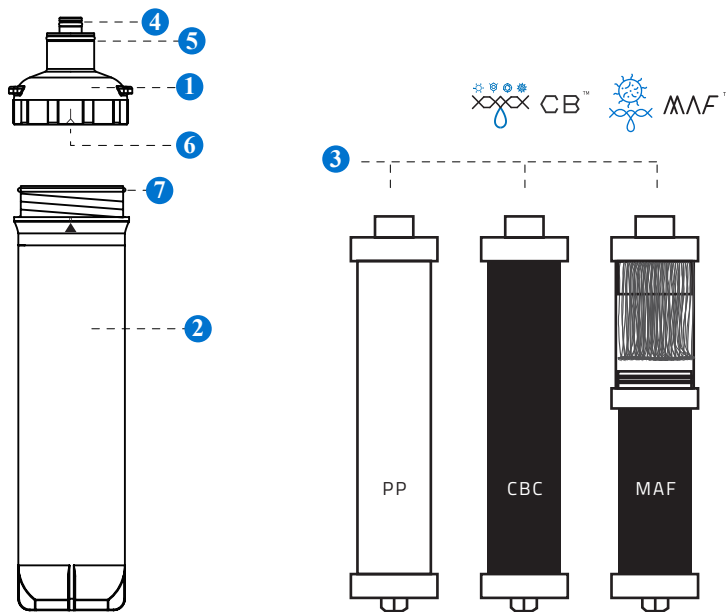


## Product description

- 14ECO was created with one purpose: environmentally-friendly clean & safe drinking water.
- 14ECO can lower replacement costs since the filter housing is reusable.
- 14ECO can be quickly and easily installed for friendly replacement.

## Product composition



- Top Cap
- Housing
- Inner Module (PP/ CBC/ MAF)
- O-ring → (10.77x2.62mm)
- O-ring → (28.24x2.62mm)
- O-ring → (17x2mm)
- O-ring → (60x2.5mm)

- O-ring replacement kit (O-ring 4 5 6 7 each 1)



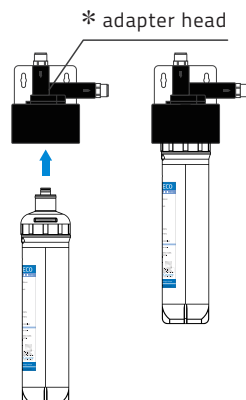
Only available with replacement.

## How to install filter cartridge

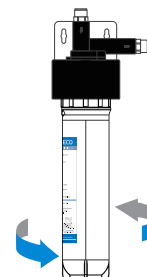
**Step. 1** Remove the lid.



**Step. 2** Push in the filter into the \* adapter head.



**Step. 3** Rotate "anti-clockwise" until "non-rotatable"



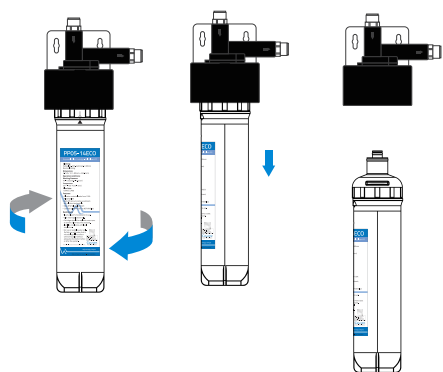
**Ready to use**



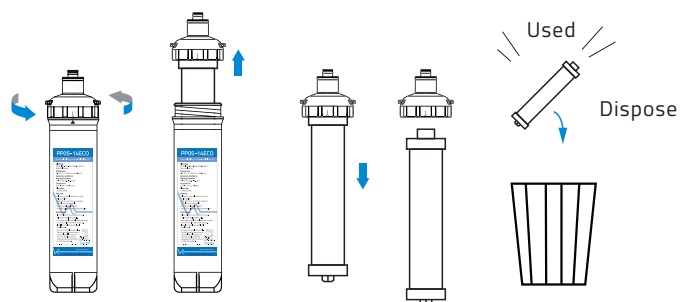
\* adapter head shall be purchased with additional cost.  
Visit → [www.caware.com.tw](http://www.caware.com.tw)

## How to replace inner replaceable filter element

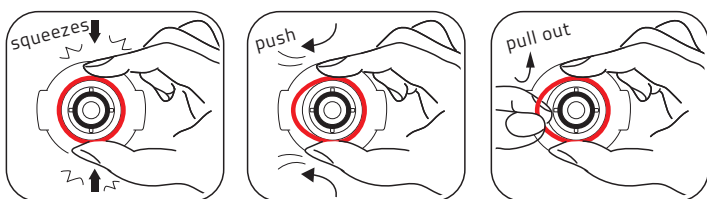
**Step. 1** To disassemble filter cartridge off adapter head. Rotate filter housing clockwise and downward to remove the filter.



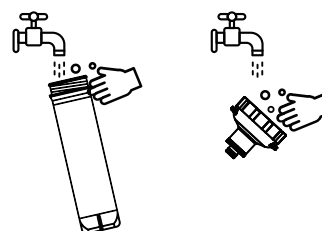
**Step. 2** Rotate the top cap anti-clockwise, pull out the used inner module and dispose it to the trash can. Start to replace inner filter element.



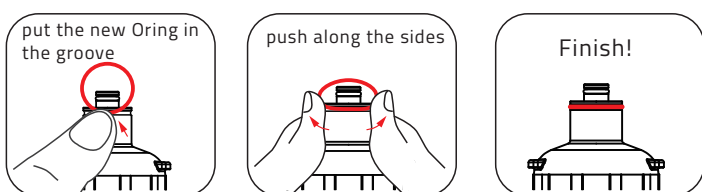
**Step. 3** Remove 4pcs of Oring (4 5 6 7 each 1) with the same method.



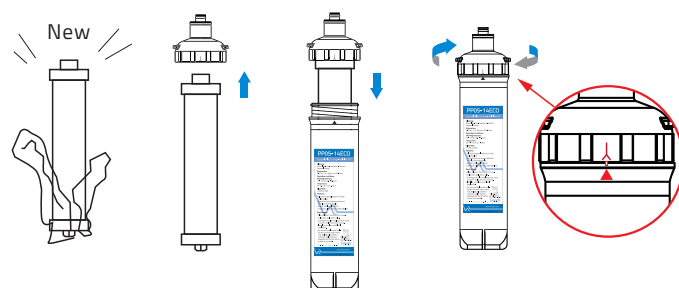
**Step. 4** Wash with clean water and clean the filter housing before replacement new inner module.



**Step. 5** Install 4pcs of new Oring with the same method. (4 5 6 7 each 1)



**Step. 6** Unpack the new inner module, plug into the top cap, put them back to the housing and rotate left tight until to the alignment point.



**Ready to install**

Turn to back page installation to install filter cartridge.



### Reminder

- The housing is reusable, but for hygienic reasons, if it becomes discolored or cannot be washed clean, please replace it with a new one.
- Suggest to glue some silicone oil on new Oring replacement.



User Manual